

SM Series

SM-07

Applications

Indoor - Office, Clinic, Class room, Corridor,
Kitchen, Retail shop, Workshop

Mounting

Surface

THD

< 10

Power Factor

0.95

Housing

Iron phosphated steel

Diffuser

PMMA

Internal Protection

IP 20

Impact Strength

IK 04

Weight

1.2 - 2.7 Kg

Efficacy

110 Lumens / Watt

Working Temp (ta)

60°C

Warranty

5 Years

Life Time

72,000 Hours

CRI

> 80

Certification

SASO 2902

UL Listed

LM79, ISTMT, TM21

Photobiological



Other Options

Emergency Backup - 3 Hr

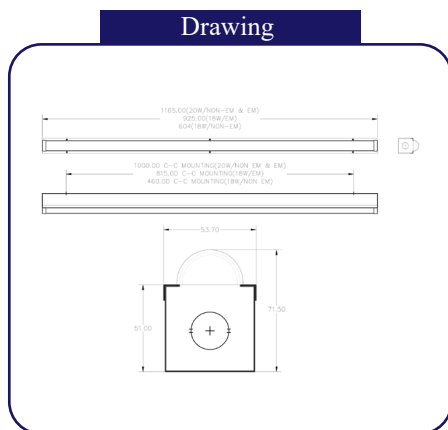
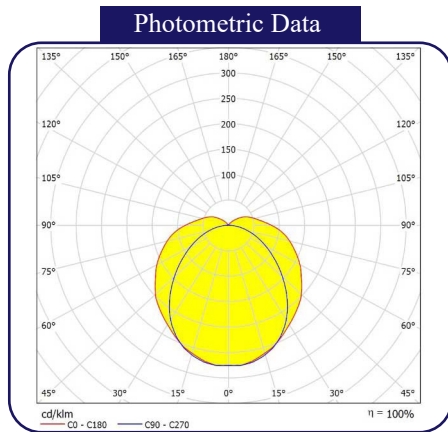
Dimming 0-10V

Dali Interface

Pendant Mounted

Flexible Size

Continuous Linear



Model	Power	Size (L x W x H)	Lumen	Voltage	CCT	Beam Angle
NLC SM-07	10W	604 x 54 x 72 mm	1100 LM	220-240V/50/60Hz	3000K	120°
	20W	1165 x 54 x 72 mm	2200 LM		4000K	
	37W		4070 LM	6500K		



Environment friendly product that is free of any hazardous materials