

# STREAM

UP TO 120 lm/w  
Pure Light, Simple Design



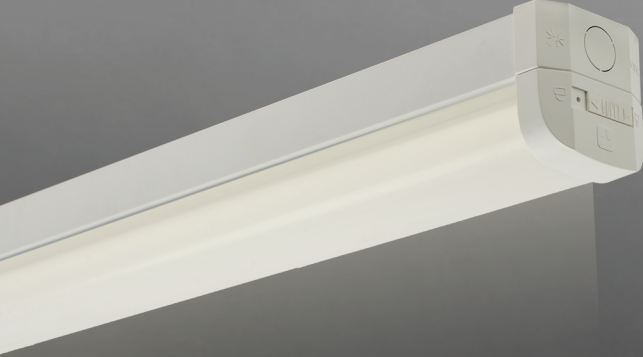
IP20



Warranty



Linear design



A modern linear lighting solution that delivers uniform brightness and sleek aesthetics. Designed for versatile indoor use, it enhances every space with reliable performance and elegant simplicity.

## • APPLICATION



Residential Areas



Galleries and Museums



Hospitality Spaces



Reception Areas





Retail Stores




Offices and Meeting Rooms

## • CHARACTERISTICS & SPECIFICATIONS TABLE

### Technical Parameters

Input:	220-240VAC   50/60 Hz
Power Factor:	>0.95
THD:	<15
Surge protection:	1 KV (L-N), 2KV(L-N-PE)
Working Temp (ta):	45°C
Electrical Class:	Class II 
Operating Humidity:	20-85% RH
Color Temperature :	

### Features

Housing :	Steel
Mounting:	Surface Mounted / Hanging
Optics :	Polycarbonate
Body Finish:	Electrostatic Polyester Powder-Coated
Body Color:	Available Colors: White
Lifetime :	L70B50 > 100,000h / L80B20 > 50,000h
LED Type:	SMD2835
Emergency Backup:	Optional
Dimming:	Optional
Switching Cycles:	>50,000 Times
Flicker Free:	

## • PERFORMANCE

Model	Power	Efficiency	Lumen	Beam Angle	CRI	Source
NLC-SM	20W 40W	120lm/W	2400lm 4800lm	120°	Standard: >80 Optional: >90	

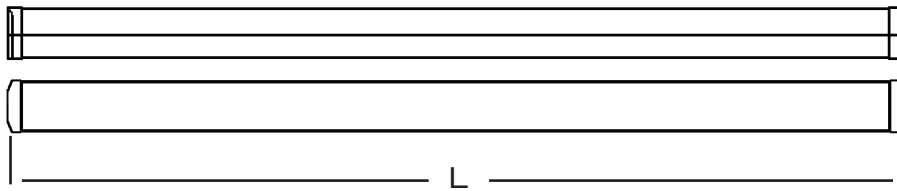
\*Above values are calculated based on the product with CCT 4000K

\*Values shown are subject to ±10% tolerance

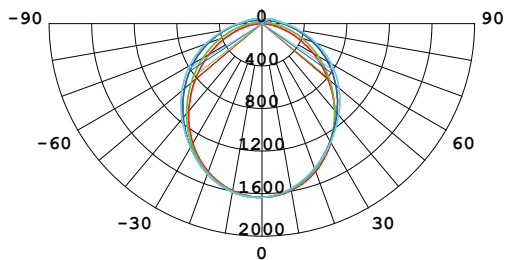
## • DRAWING

Ensure IP20-rated sealing when connecting the cable

20W | 40W  
L612 x H67.5 x W66.18mm | L1174 x H67.5 x W66.18mm



## • LIGHT DISTRIBUTIONS CURVE



## • CERTIFICATES



CB



RoHS



Street 77, Second Industrial City  
P.O. Box 353, Dammam-3141



Tel: +966-(013) 812-2020  
Fax: +966-(013) 812-2250



info@nlc.com.sa  
www.nlc.com.sa